

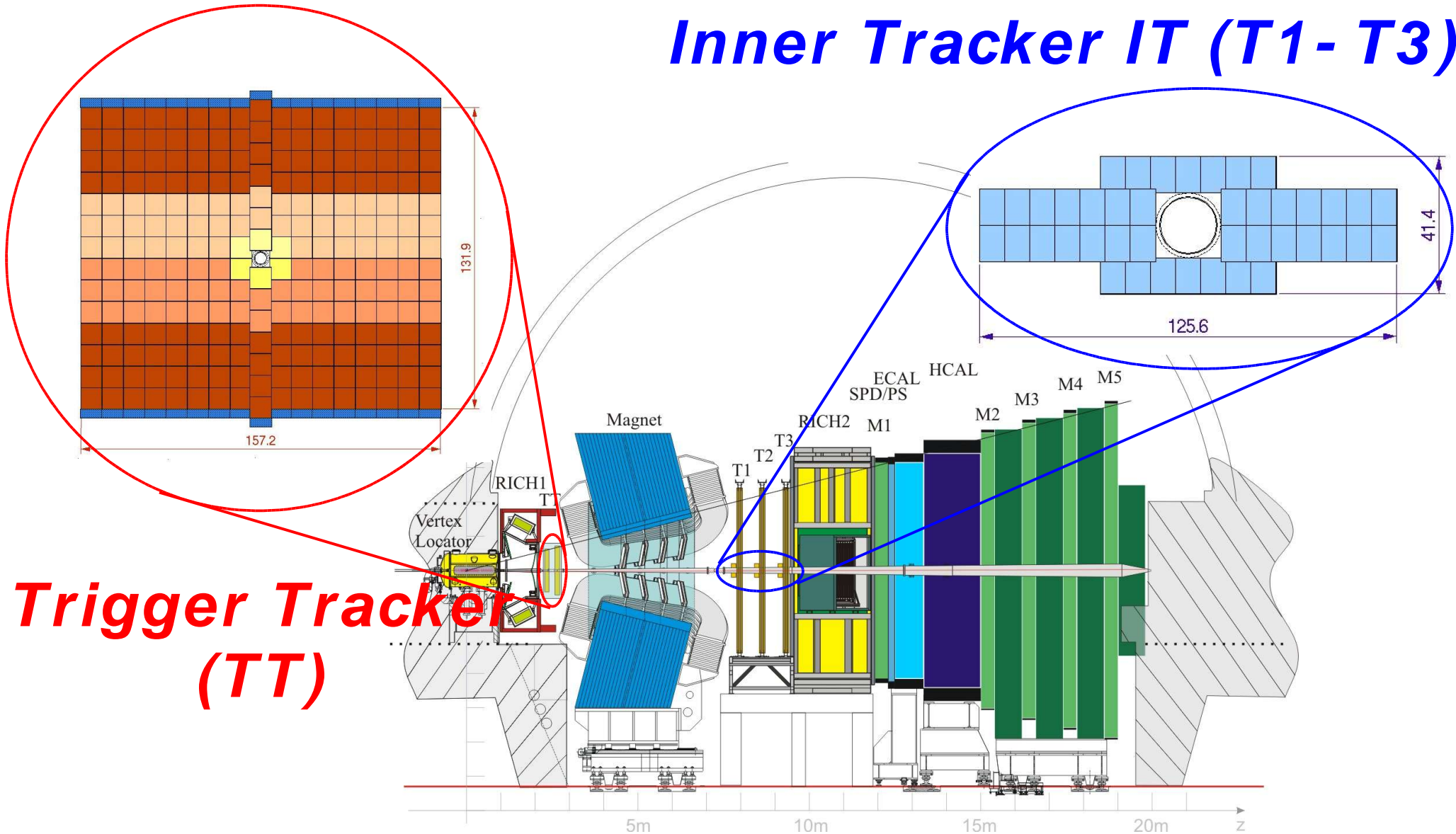


***ST electronics review***  
***CERN — February 17, 2004***

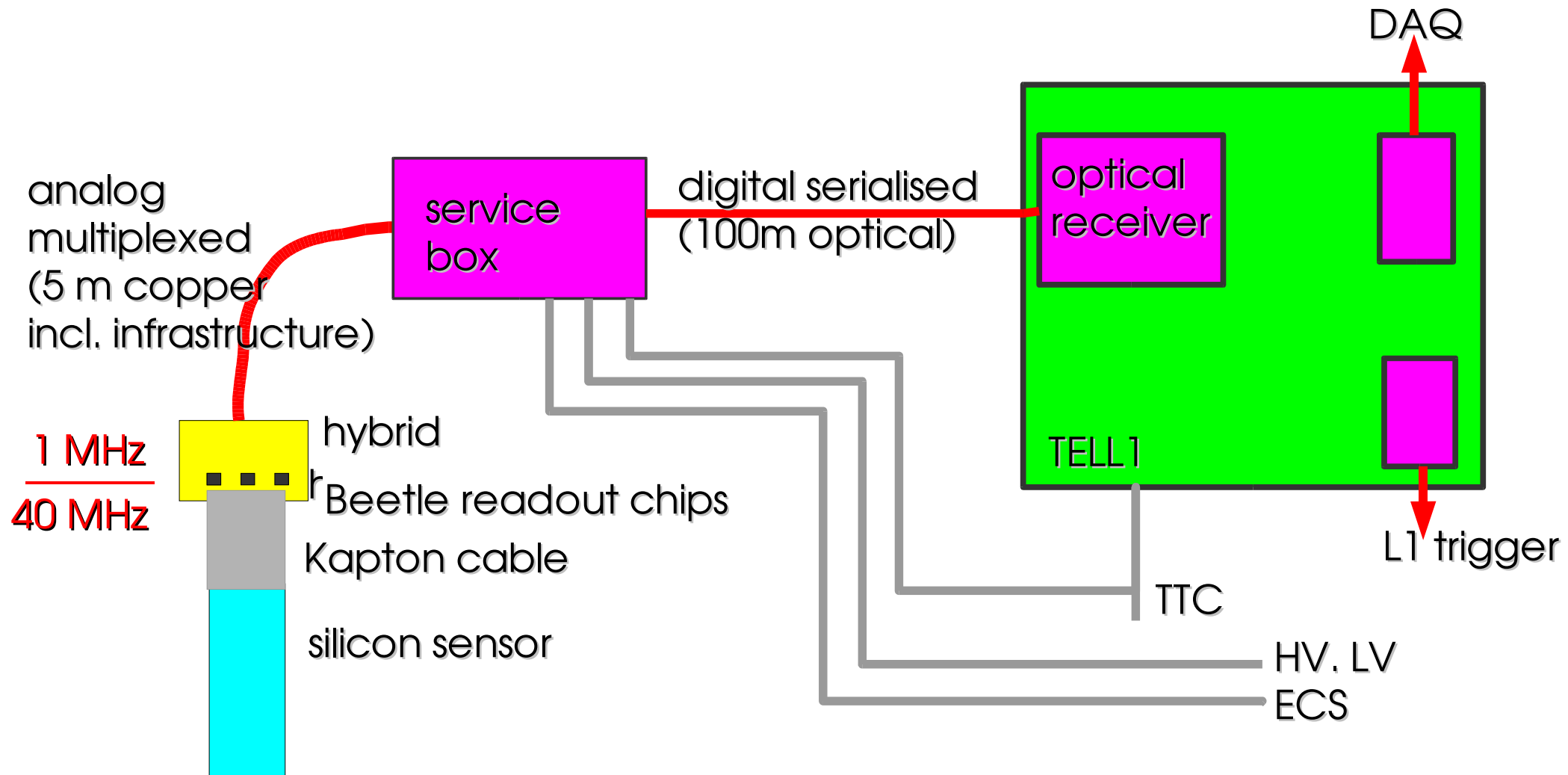
# ***Overview***

# Silicon Tracker

## Inner Tracker IT (T1-T3)



# system components relevant for the electronics design:





# Silicon Tracker Electronics Review

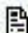
[ last update: Monday 16 February 2004 ]

Date/Time: Tuesday 17 February 2004 from 09:00 to 18:00


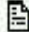
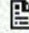
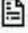
Location: CERN

Room: [40-4-C01](#)

Chair: Jorgen Christiansen

Material:  [documents](#)

Tuesday 17 February 2004

09:00	Overview and system aspects (10')	Ueli Straumann
09:20	Electronics aspects of sensors and interconnect cable (30') (  <a href="#">transparencies</a> )	Johannes Gassner
10:00	Beetle chip (30') (  <a href="#">transparencies</a> )	Christian Bauer
10:40	Coffee	
11:10	Front-end hybrid (20') (  <a href="#">transparencies</a> )	Christian Bauer
11:40	Data transmission and service box (40') (  <a href="#">transparencies</a> )	Achim Vollhardt
12:30	Lunch	
14:00	Optical receiver board (20') (  <a href="#">transparencies</a> )	Achim Vollhardt (for Dirk Wiedner)
14:30	TELL1 board (30') (  <a href="#">transparencies</a> )	Guido Haefeli
15:10	Power supplies and distribution (30') (  <a href="#">transparencies</a> )	Yuri Ermoline
15:50	ECS (30') (  <a href="#">transparencies</a> )	Daniel Esperante
16:30	End of presentations	

# ST: participating institutes:

Sensors:  
specs., ordering, probing etc.

Zürich

Beetle, hybrid

MPI Heidelberg

Assembly and test  
ladders – modules – boxes

IT (T1..T3)  
Lausanne  
Santiago

TT  
Zürich

Readout link  
copper cable, service box, optical

Zürich

Optical receiver

PI Heidelberg

TELL1

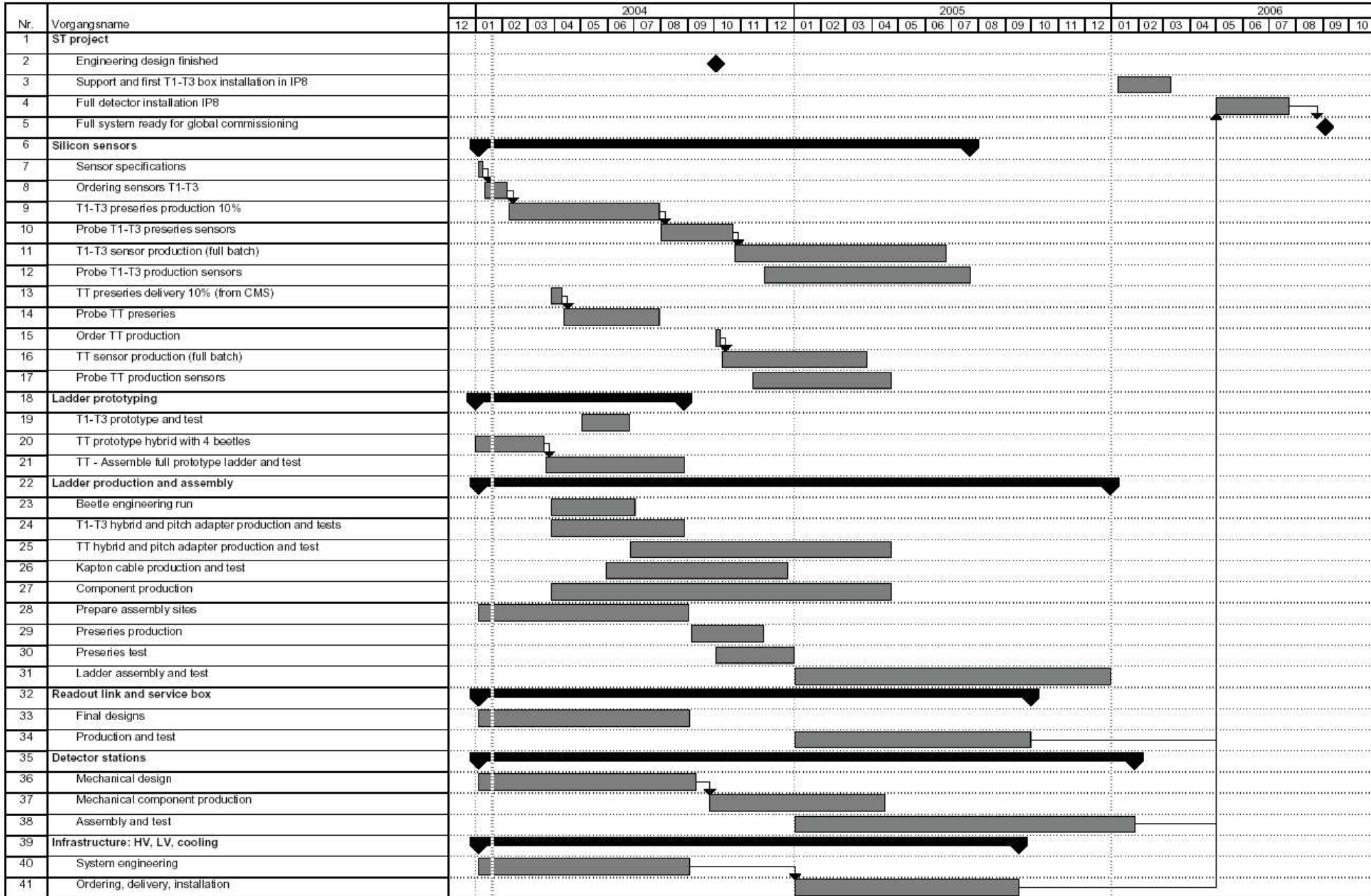
Lausanne

ECS, LV, HV

Santiago



# Project Schedule



# Milestones (1)

---

## Project:

<i>Final decision on production site(s)</i>	<i>06/2003</i>	<i>achieved</i>
<i>Engineering design finished</i>	<i>12/2004</i>	
<i>Full system ready for global commissioning</i>	<i>09/2006</i>	
<i>Full system ready for beam</i>	<i>04/2007</i>	

## IT Stations:

<i>Final sensor order placed</i>	<i>04/2004</i>
<i>10% of sensors delivered</i>	<i>10/2004</i>
<i>All sensors delivered</i>	<i>10/2005</i>
<i>10% of hybrids assembled and tested</i>	<i>12/2004</i>
<i>All hybrids assembled and tested</i>	<i>10/2005</i>
<i>10% of ladders assembled</i>	<i>06/2005</i>
<i>All ladders assembled</i>	<i>03/2006</i>
<i>Detector boxes ready for ladder installation</i>	<i>10/2005</i>
<i>First detector box in IP8</i>	<i>03/2006</i>



# Milestones (2)

---

## TT Station:

<i>Final sensor order placed</i>	<i>12/2004</i>
<i>10% of sensors delivered</i>	<i>02/2005</i>
<i>All sensors delivered</i>	<i>10/2005</i>
<i>10% of hybrids assembled and tested</i>	<i>04/2005</i>
<i>All hybrids assembled and tested</i>	<i>10/2005</i>
<i>10% of ladders assembled</i>	<i>06/2005</i>
<i>All ladders assembled</i>	<i>03/2006</i>
<i>TT station mechanics ready for ladder installation</i>	<i>10/2005</i>
<i>TT station completed and tested</i>	<i>06/2006</i>

## Electronics:

<i>Full prototype test of readout link</i>	<i>06/2003</i>
<i>Beetle engineering run</i>	<i>07/2004</i>
<i>Beetle production run</i>	<i>03/2005</i>
<i>10% of r/o links and service boxes produced</i>	<i>09/2005</i>
<i>All r/o links and service boxes produced</i>	<i>12/2005</i>