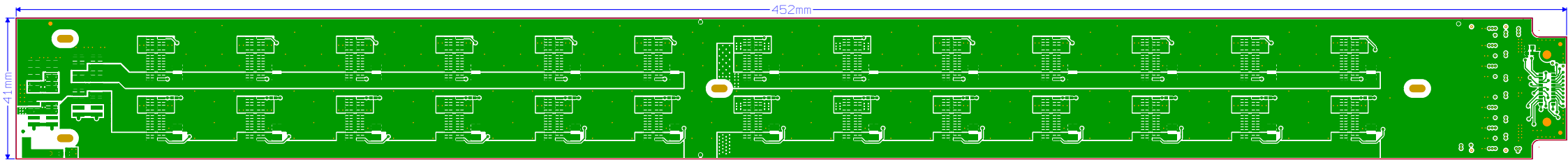
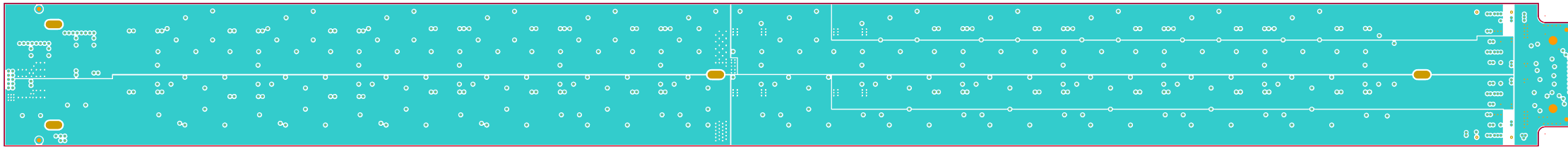


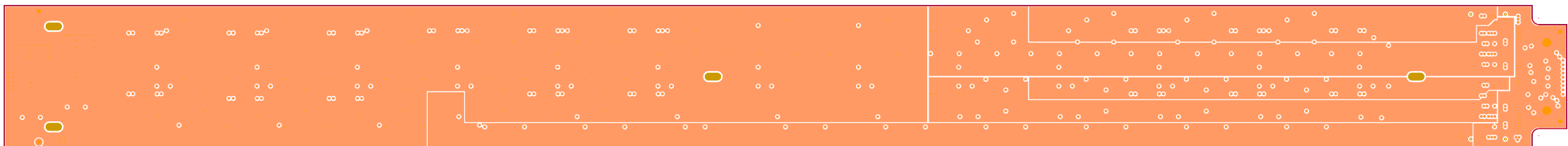
DCDC_Bus_A_V9_Layer1Top



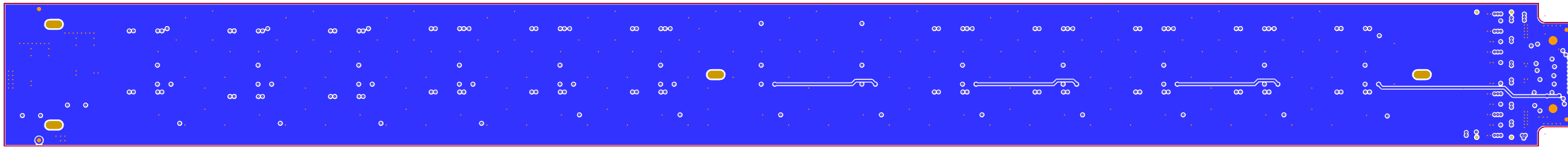
DCDC_Bus_A_V9_Layer2



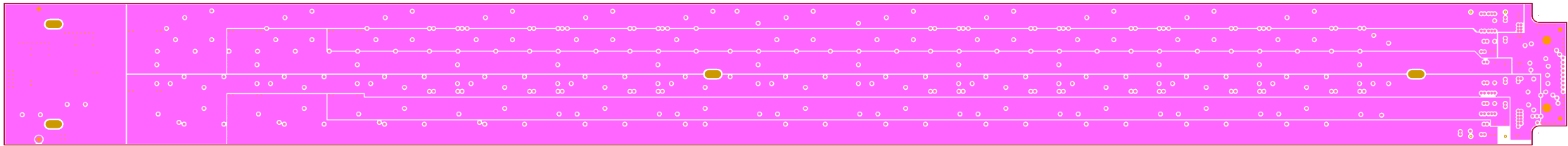
DCDC_Bus_A_V9_Layer3



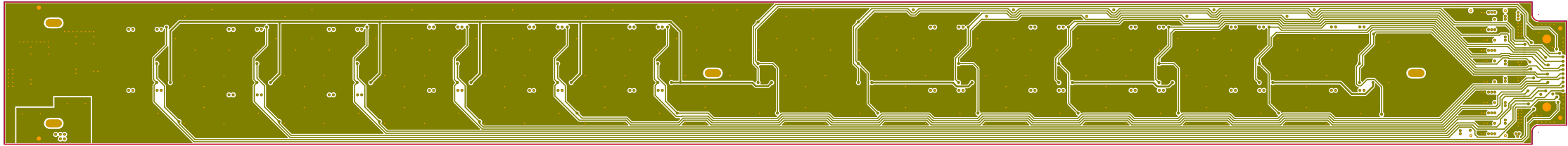
DCDC_Bus_A_V9_Layer4



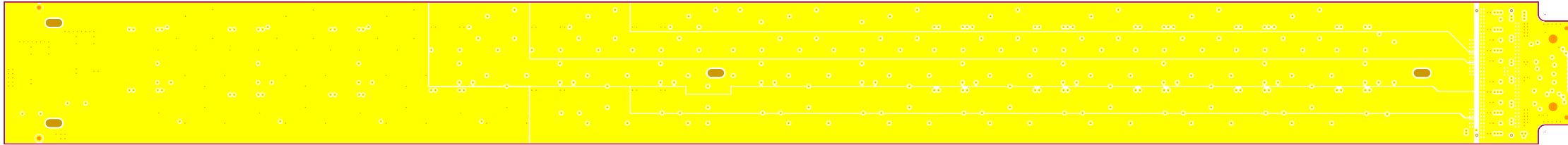
DCDC_Bus_A_V9_Layer5



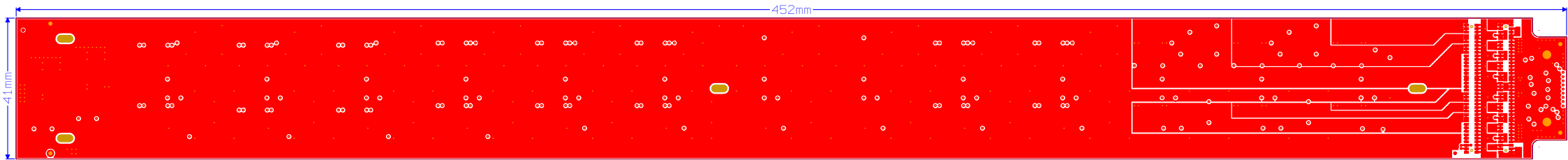
DCDC_Bus_A_V9_Layer6



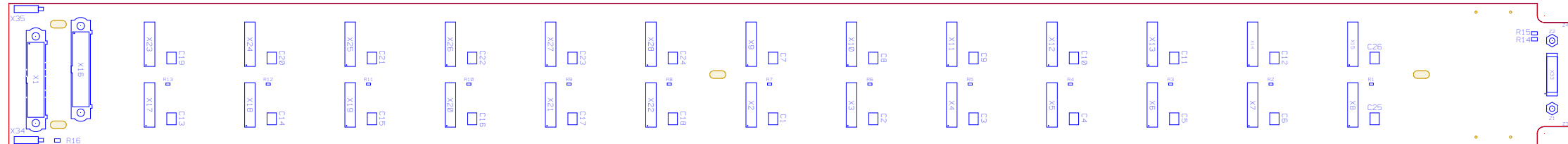
DCDC_Bus_A_V9_Layer7



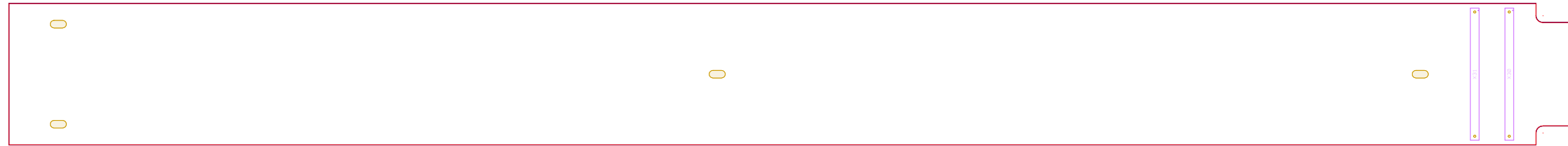
DCDC_Bus_A_V9_Layer8Bottom



DCDC_Bus_A_V9_Assembly_Top



DCDC_Bus_A_V9_Assembly_Bottom



Bill of Material DCDC_Bus_A_V9

ITEM_NUMBER	COMPANY PART NO	COUNT	REFERENCE NAME
1	BS1/90_Buchse1pol	2	X34 X35
2	CAP_1210_22u	26	C1 C2 C3 C4 C5 C6 C7 C8 not to assembly TMK325B7226MM-TR Höhe=2.5mm C9 C10 C11 C12 C13 C14 not to assembly C15 C16 C17 C18 C19 C20 not to assembly C21 C22 C23 C24 C25 C26 not to assembly
3	CLE-116-01-G-DV_Female	26	X2 X3 X4 X5 X6 X7 X8 X9 X10 X11 X12 X13 X14 X15 X17 X18 X19 X20 X21 X22 X23 X24 X25 X26 X27 X28
4	CLM-138-02-L-D-A-P_Female	2	X30 X31
5	M80-20pin_SMT	2	X1 X16
6	Molex-Plug-501920-4001	1	X33
7	MountingHole_1.20mm2.20mm	2	Z3 Z4
8	RES_0402_10k	13	R1 R2 R3 R4 R5 R6 R7 R8 not to assembly R9 R10 R11 R12 R13 not to assembly
9	RES_0603_0	3	R14 R15 R16
10	SMTSO-M1.6-4-ET	2	Z1 Z2